

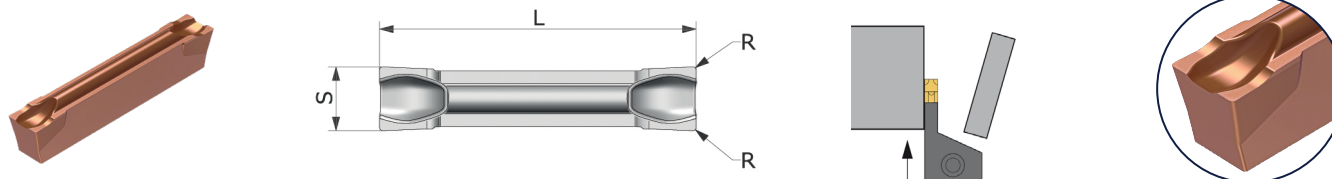
Massime prestazioni su inox e superleghe resistenti al calore

Nuovo rivestimento HiPMIS

Prova INOXA SX1:
acquista 10 inserti tra quelli proposti,
ricevi l'utensile a condizioni speciali!

PROMOZIONE VALIDA DAL 20/10/2025 AL 23/01/2026 O FINO A ESAURIMENTO SCORTE.

BTNN | Inserti per troncatura

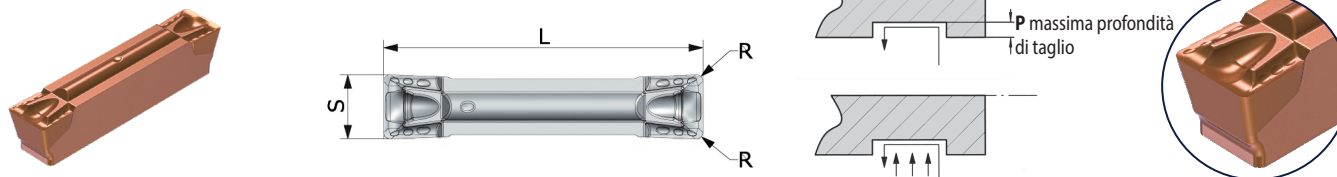


DESCRIZIONE	IIC	R/L	L	RR	RL	S	S+	S-	Alfa	Alfa	
WG300 Ref.	KM INOXA SX1	sede	(C)	L	RR	RL	S	S+	S-	α°	α°
	MS										
BTNN 2	KH68463	20	N	20,00	0,2	0,2	2,08	0,10	0,10	0	0
BTNN 2,5	KH68464	20	N	20,00	0,2	0,2	2,58	0,10	0,10	0	0
BTNN 3	KH68465	30	N	20,00	0,2	0,2	3,08	0,10	0,10	0	0

BTNN - Troncatura

Tagliante arcuato con fianchi rinforzati. La gola ampia e spaziosa consente un eccellente controllo del truciolo. Efficiente sulla maggior parte dei materiali.

XTNS | Inserti per scanalatura e tornitura



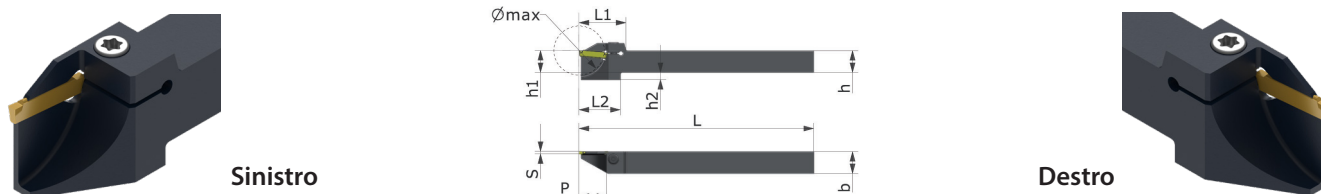
DESCRIZIONE	IIC	R/L	L	PDPT	REL/RER	S	S+	S-	
WG300 Ref.	KM INOXA SX 1	sede	(C)	L	P	R	S	S+	S-
	MS								
XTNS 202	KH68453	20	N	20,15	1,60	0,2	2,08	0,1	-0,1
XTNS 302	KH68454	30	N	20,15	2,40	0,2	3,08	0,1	-0,1
XTNS 304	KH68455	30	N	20,15	2,40	0,4	3,08	0,1	-0,1

XTNS - Dalla sgrossatura alla finitura

Il tagliante principale inclinato con smusso rinforzato e l'angolo di attacco positivo consentono eccellente controllo del truciolo, specialmente su materiali difficili da lavorare.

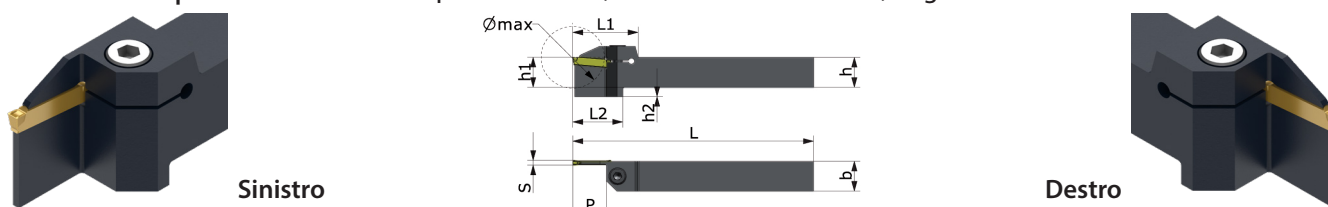
PROMO BTNN | XTNS | INOXA SX1

P92 CXCBL/L | Utensili monoblocco rinforzati per troncatura e scanalatura, larghezza 2.0 + 2.5 mm



DESCRIZIONE	IDNR	MIID	Hand	H	HF	B	CDX	CW	OAL	LH	LTA			
WG380 Ref.	ID-Nr.	sede	(↺)	Ø max	h	h1	h2	b	P	S	L	L1	L2	
P92 CXCBL 0808 K20+25 11	KH33444	20	L	22	8	8	4	8	11	2	125	19,5	19,5	10
P92 CXCBL 1010 K20+25 11	KH33445	20	L	22	10	10	6	10	11	2	125	19,5	19,5	10
P92 CXCBL 1212 K20+25 11	KH33448	20	L	22	12	12	4	12	11	2	125	19,5	19,5	10
P92-CXCBL 1212 K20+25 14	KH44742	20	L	28	12	12	4	12	14	2	125	25	22	10
P92 CXCBL 1616 K20+25 11	KH33452	20	L	22	16	16	-	16	11	2	125	19,5	-	10
P92 CXCBL 1616 K20+25 17	KH33473	20	L	34	16	16	5	16	17	2	125	34	26	1
P92 CXCBL 2020 K20+25 14	KH33454	20	L	28	20	20	-	20	14	2	125	30	-	1
P92 CXCBL 2020 K20+25 17	KH33474	20	L	34	20	20	-	20	17	2	125	34	-	1
P92 CXCBL 2525 M20+25 14	KH33455	20	L	28	25	25	-	25	14	2	150	30	-	1
P92 CXCBL 2525 M20+25 17	KH33475	20	L	34	25	25	-	25	17	2	150	34	-	1
P92 CXCBL 0808 K20+25 11	KH33336	20	R	22	8	8	4	8	11	2	125	19,5	19,5	10
P92 CXCBL 1010 K20+25 11	KH33446	20	R	22	10	10	6	10	11	2	125	19,5	19,5	10
P92 CXCBL 1212 K20+25 11	KH33447	20	R	22	12	12	4	12	11	2	125	19,5	19,5	10
P92-CXCBL 1212 K20+25 14	KH44737	20	R	28	12	12	4	12	14	2	125	25	22	10
P92 CXCBL 1616 K20+25 11	KH33451	20	R	22	16	16	-	16	11	2	125	19,5	-	10
P92 CXCBL 1616 K20+25 17	KH33470	20	R	34	16	16	5	16	17	2	125	34	26	1
P92 CXCBL 2020 K20+25 14	KH33453	20	R	28	20	20	-	20	14	2	125	30	-	1
P92 CXCBL 2020 K20+25 17	KH33471	20	R	34	20	20	-	20	17	2	125	34	-	1
P92 CXCBL 2525 M20+25 14	KH33456	20	R	28	25	25	-	25	14	2	150	30	-	1
P92 CXCBL 2525 M20+25 17	KH33472	20	R	34	25	25	-	25	17	2	150	34	-	1

P92 CXCBL/L | Utensili monoblocco per troncatura, scanalatura e tornitura, larghezza 2.0 + 2.5 mm



DESCRIZIONE	IDNR	MIID	Hand	H	HF	B	CDX	CW	OAL	LH	LTA			
WG380 Ref.	ID-Nr.	sede	(↺)	Ø max	h	h1	h2	b	P	S	L	L1	L2	
P92 CXCBL 1616 K20+25	KH59178	20	L	34	16	16	5	16	17	2	125	34	26	1
P92 CXCBL 2020 K20+25	KH59179	20	L	34	20	20	-	20	17	2	125	34	-	1
P92 CXCBL 2525 M20+25	KH59180	20	L	34	25	25	-	25	17	2	150	34	-	1
P92 CXCBL 1616 K20+25	KH59181	20	R	34	16	16	5	16	17	2	125	34	26	1
P92 CXCBL 2020 K20+25	KH59182	20	R	34	20	20	-	20	17	2	125	34	-	1
P92 CXCBL 2525 M20+25	KH59183	20	R	34	25	25	-	25	17	2	150	34	-	1

Inserti
Catalogo GripLock in vigore
e nel presente volantino



p. 56-65
p. 2



p. 66

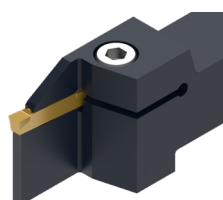


p. 68-75
p. 2

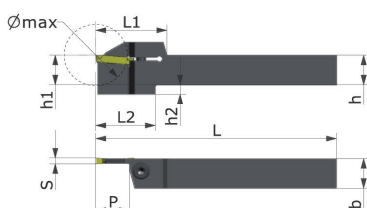


p. 78-80

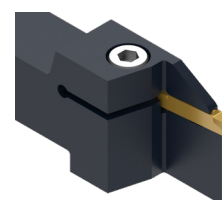
P92 CXCBL/L | Utensili monoblocco rinforzati per troncatura, scanalatura e tornitura, larghezza 3.0 mm



Sinistro

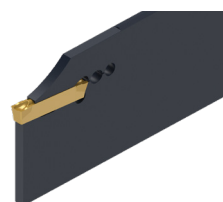


Destro

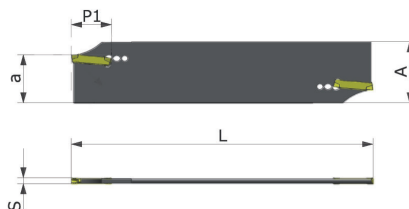


DESCRIZIONE	IDNR	MIID	Hand	H	HF	B	CDX	CW	OAL	LH	LTA			
WG380 Ref.	ID-Nr.	sede	(↺)	Ø max	h	h1	h2	b	P	S	L	L1	L2	
P92 CXCBL 1212 K30 10	KH28189	30	L	20	12	12	5	12	10	3,0	125	21	22	11
P92 CXCBL 1212 K30 14	KH19698	30	L	28	12	12	5	12	14	3,0	125	34	26	1
P92 CXCBL 1616 K30 10	KH38514	30	L	20	16	16	5	16	10	3,0	125	28	22	1
P92 CXCBL 1616 K30 14	KH10092	30	L	28	16	16	5	16	14	3,0	125	34	28	1
P92 CXCBL 1616 K30 17	KH10094	30	L	34	16	16	5	16	17	3,0	125	37	31	1
P92 CXCBL 2020 K30 10	KH38515	30	L	20	20	20	5	20	10	3,0	125	30	26	1
P92 CXCBL 2020 K30 14	KH10096	30	L	28	20	20	5	20	14	3,0	125	34	26	1
P92 CXCBL 2020 K30 17	KH10098	30	L	34	20	20	5	20	17	3,0	125	37	29	1
P92 CXCBL 2525 M30 10	KH31254	30	L	20	25	25	-	25	10	3,0	150	30	-	2
P92 CXCBL 2525 M30 14	KH10108	30	L	28	25	25	-	25	14	3,0	150	34	-	2
P92 CXCBL 2525 M30 17	KH10110	30	L	34	25	25	-	25	17	3,0	150	37	-	2
P92 CXCBL 1212 K30 10	KH28188	30	R	20	12	12	5	12	10	3,0	125	21	22	11
P92 CXCBL 1212 K30 14	KH19533	30	R	28	12	12	5	12	14	3,0	125	34	26	1
P92 CXCBL 1616 K30 10	KH38516	30	R	20	16	16	5	16	10	3,0	125	28	22	1
P92 CXCBL 1616 K30 14	KH10091	30	R	28	16	16	5	16	14	3,0	125	34	28	1
P92 CXCBL 1616 K30 17	KH10093	30	R	34	16	16	5	16	17	3,0	125	37	31	1
P92 CXCBL 2020 K30 10	KH38517	30	R	20	20	20	5	20	10	3,0	125	30	26	1
P92 CXCBL 2020 K30 14	KH10095	30	R	28	20	20	5	20	14	3,0	125	34	26	1
P92 CXCBL 2020 K30 17	KH10097	30	R	34	20	20	5	20	17	3,0	125	37	29	1
P92 CXCBL 2525 M30 10	KH36432	30	R	20	25	25	-	25	10	3,0	150	30	-	2
P92 CXCBL 2525 M30 14	KH10107	30	R	28	25	25	-	25	14	3,0	150	34	-	2
P92 CXCBL 2525 M30 17	KH10109	30	R	34	25	25	-	25	17	3,0	150	37	-	2

P92 TMS | TWIN Lame



Sinistro



DESCRIZIONE	IDNR	MIID	Hand	H	HF	CDX	CW	OAL	
WG310 Ref.	ID-Nr.	sede	(↺)	A	a	P1	S	L	
P92 TMS 26 20+25	KH36644	20	N	26	21,4	18,5	2	110	28
P92 TMS 32 20+25	KH36643	20	N	32	25,0	18,5	2	150	28
P92 TMS 26 30	KH36645	30	N	26	21,4	18,5	3,0	110	28
P92 TMS 32 30	KH33429	30	N	32	25,0	18,5	3,0	150	28

Inserti
Catalogo GripLock in vigore
e nel presente volantino



p. 56-65
p. 2



p. 66



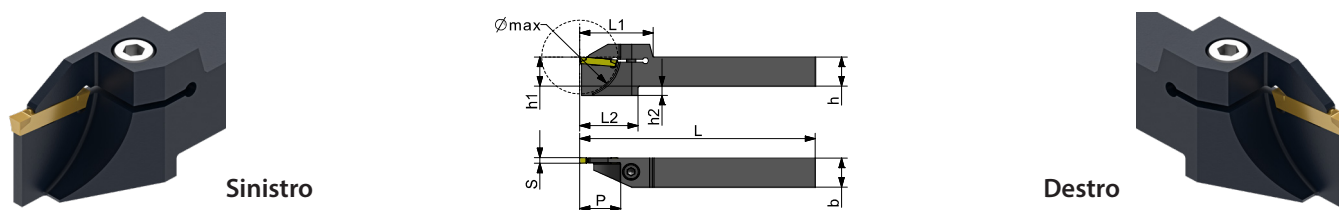
p. 68-75
p. 2



hard machining
p. 78-80

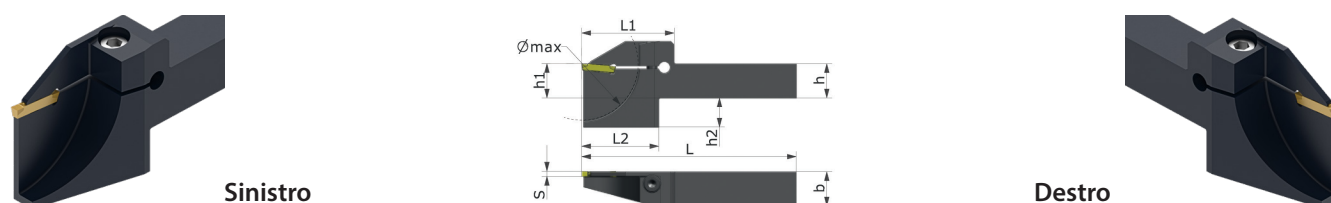
PROMO BTNN | XTNS | INOXA SX1

P92 A CXCBR/L | Utensili monoblocco per sporgenze elevate da \varnothing 42 mm a \varnothing 56 mm, larghezza 3.0 mm



DESCRIZIONE	IDNR	MIID	Hand	H	HF	B	CDX	CW	OAL	LH	LTA			
WG380 Ref.	ID-Nr.	sede	(↺)	\varnothing max	h	h1	h2	b	P	S	L	L1	L2	
P92 A CXCBL 1616 K30 42	KH35158	30	L	42	16	16	5	16	7,0	3,0	125	39	31	1
P92 A CXCBL 2020 K30 42	KH35160	30	L	42	20	20	5	20	7,0	3,0	125	39	31	1
P92 A CXCBL 2525 M30 42	KH35163	30	L	42	25	25	-	25	-	3,0	150	39	-	1
P92 A CXCBL 2020 K30 56	KH24890	30	L	56	20	20	5	20	20,5	3,0	125	46	38	1
P92 A CXCBL 2525 M30 56	KH24891	30	L	56	25	25	-	25	14,0	3,0	150	46	-	1
P92 A CXCBR 1616 K30 42	KH35159	30	R	42	16	16	5	16	7,0	3,0	125	39	31	1
P92 A CXCBR 2020 K30 42	KH35161	30	R	42	20	20	5	20	7,0	3,0	125	39	31	1
P92 A CXCBR 2525 M30 42	KH35162	30	R	42	25	25	-	25	-	3,0	150	39	-	1
P92 A CXCBR 2020 K30 56	KH25568	30	R	56	20	20	5	20	20,5	3,0	125	46	38	1
P92 A CXCBR 2525 M30 56	KH25685	30	R	56	25	25	-	25	14,0	3,0	150	46	-	1

P92 A CXCBR/L | Utensili monoblocco per sporgenze elevate fino a \varnothing 65 mm, larghezza 3.0 mm



DESCRIZIONE	IDNR	MIID	Hand	H	HF	B	CW	OAL	LH	LTA			
WG380 Ref.	ID-Nr.	sede	(↺)	\varnothing max	h	h1	h2	b	S	L	L1	L2	
P92 A CXCBL 2020 K30 65	KH10136	30	L	65	20	20	17	20	3,0	125	54	45	12
P92 A CXCBL 2525 M30 65	KH10144	30	L	65	25	25	12	25	3,0	150	54	45	12
P92 A CXCBR 2020 K30 65	KH10135	30	R	65	20	20	17	20	3,0	125	54	45	12
P92 A CXCBR 2525 M30 65	KH10143	30	R	65	25	25	12	25	3,0	150	54	45	12

Inserti
Catalogo GripLock in vigore
e nel presente volantino



p. 56-65
p. 2



p. 66

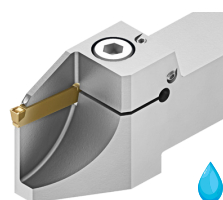


p. 68-75
p. 2

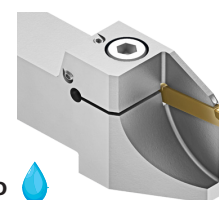
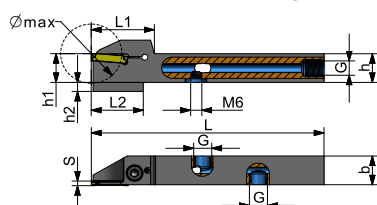


p. 78-80

P92 CXCBL/L 20+25 HP | Utensili monoblocco rinforzati con refrigerante interno, larghezza 2.0 e 2.5 mm



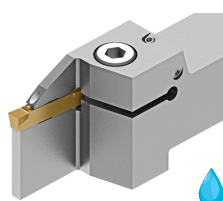
Sinistro



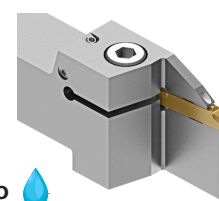
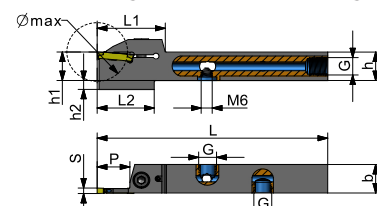
Destro

DESCRIZIONE	IDNR	MIID	Hand	H	HF	B	CW	OAL	LH	LTA				
WG3805 Ref.	ID-Nr.	sede	()	G	Ø max	h	h1	h2	b	S	L	L1	L2	
P92 CXCBL 1212 K20+25 11HPM8x1	KH57245	20	L	M8x1	22	12	12	4	12	2	125	19,5	19,5	10
P92 CXCBL 1616 K20+25 11HPG1/8	KH57247	20	L	G1/8	22	16	16	-	16	2	125	19,5	-	10
P92 CXCBL 1212 K20+25 14HPM8X1	KH63222	20	L	M8x1	28	12	12	4	12	2	125	25,0	22	10
P92 CXCBL 1616 K20+25 17HPG1/8	KH57248	20	L	G1/8	34	16	16	5	16	2	125	34	26	1
P92 CXCBL 2020 K20+25 17HPG1/8	KH57251	20	L	G1/8	34	20	20	-	20	2	125	34	-	1
P92 CXCBL 1212 K20+25 11HPM8x1	KH57255	20	R	M8x1	22	12	12	4	12	2	125	19,5	19,5	10
P92 CXCBL 1616 K20+25 11HPG1/8	KH57257	20	R	G1/8	22	16	16	-	16	2	125	19,5	-	10
P92 CXCBL 1212 K20+25 14HPM8X1	KH63223	20	R	M8x1	28	12	12	4	12	2	125	25,0	22	10
P92 CXCBL 1616 K20+25 17HPG1/8	KH57258	20	R	G1/8	34	16	16	5	16	2	125	34	26	1
P92 CXCBL 2020 K20+25 17HPG1/8	KH57262	20	R	G1/8	34	20	20	-	20	2	125	34	-	1

P92 CXCBL/L 30 HP | Utensili monoblocco con refrigerante interno, larghezza 3.0 mm



Sinistro



Destro

DESCRIZIONE	IDNR	MIID	Hand	H	HF	B	CDX	CW	OAL	LH	LTA				
WG3805 Ref.	ID-Nr.	sede	()	G	Ø max	h	h1	h2	b	P	S	L	L1	L2	
P92 CXCBL 1212 K30 14HPM8x1	KH57246	30	L	M8x1	28	12	12	5	12	14	3,0	125	34	26	11
P92 CXCBL 1616 K30 14HPG1/8	KH57249	30	L	G1/8	28	16	16	5	16	14	3,0	125	34	26	1
P92 CXCBL 1616 K30 17HPG1/8	KH57250	30	L	G1/8	34	16	16	5	16	17	3,0	125	37	29	1
P92 CXCBL 2020 K30 17HPG1/8	KH57252	30	L	G1/8	34	20	20	5	20	17	3,0	125	37	29	1
P92 CXCBL 2525 M30 17HPG1/8	KH57253	30	L	G1/8	34	25	25	-	25	17	3,0	150	37	-	2
P92 CXCBL 1212 K30 14HPM8x1	KH57256	30	R	M8x1	28	12	12	5	12	14	3,0	125	34	26	11
P92 CXCBL 1616 K30 14HPG1/8	KH57259	30	R	G1/8	28	16	16	5	16	14	3,0	125	34	26	1
P92 CXCBL 1616 K30 17HPG1/8	KH57261	30	R	G1/8	34	16	16	5	16	17	3,0	125	37	29	1
P92 CXCBL 2020 K30 17HPG1/8	KH57263	30	R	G1/8	34	20	20	5	20	17	3,0	125	37	29	1
P92 CXCBL 2525 M30 17HPG1/8	KH57264	30	R	G1/8	34	25	25	-	25	17	3,0	150	37	-	2

Inserti
Catalogo GripLock in vigore
e nel presente volantino



p. 56-65
p. 2



p. 66



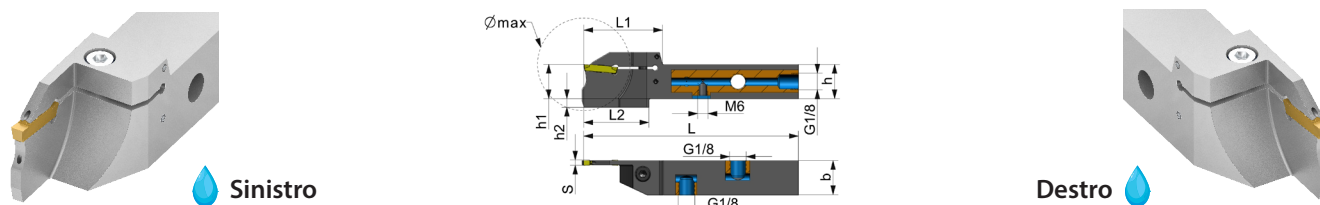
p. 68-75
p. 2



hard machining
p. 78-80

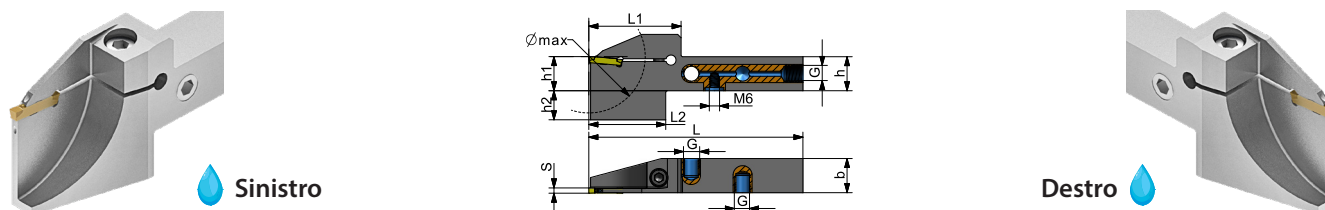
PROMO BTNN | XTNS | INOXA SX1

P92 A CXCBR/L HP | Utensili monoblocco con refrigerante interno per sporgenze elevate da $\varnothing 42$ a $\varnothing 56$ mm, larghezza 3.0 mm



DESCRIZIONE	IDNR	MIID	Hand	H	HF	B	CW	OAL	LH	LTA			
WGRGL3805 Ref.	ID-Nr.	sede	(\curvearrowright)	\varnothing max	h	h1	h2	b	S	L	L1	L2	
P92 A CXCBL 1616 K30 42 HPG1-8	KH63145	30	L	42	16	16	5	16	3,0	125	39	31	1
P92 A CXCBL 2020 K30 42 HPG1-8	KH62095	30	L	42	20	20	5	20	3,0	125	39	31	1
P92 A CXCBL 2525 M30 42 HPG1-8	KH63147	30	L	42	25	25	-	25	3,0	150	39	-	1
P92 A CXCBL 2020 K30 56 HPG1-8	KH62795	30	L	56	20	20	5	20	3,0	125	46	38	1
P92 A CXCBL 2525 M30 56 HPG1-8	KH62793	30	L	56	25	25	-	25	3,0	150	46	-	1
P92 A CXCBR 1616 K30 42 HPG1-8	KH63146	30	R	42	16	16	5	16	3,0	125	39	31	1
P92 A CXCBR 2020 K30 42 HPG1-8	KH63144	30	R	42	20	20	5	20	3,0	125	39	31	1
P92 A CXCBR 2525 M30 42 HPG1-8	KH63149	30	R	42	25	25	-	25	3,0	150	39	-	1
P92 A CXCBR 2020 K30 56 HPG1-8	KH62796	30	R	56	20	20	5	20	3,0	125	46	38	1
P92 A CXCBR 2525 M30 56 HPG1-8	KH62794	30	R	56	25	25	-	25	3,0	150	46	-	1

P92 A CXCBR/L HP | Utensili monoblocco con refrigerante interno per sporgenze elevate fino a $\varnothing 65$, larghezza 3.0 mm



DESCRIZIONE	IDNR	MIID	Hand	H	HF	B	CW	OAL	LH	LTA				
WG3805 Ref.	ID-Nr.	sede	(\curvearrowright)	G	\varnothing max	h	h1	h2	b	S	L	L1	L2	
P92 A CXCBL 2020 K30 65HPG1/8	KH57203	30	L	G1/8	65	20	20	17	20	3,0	125	54	45	12
P92 A CXCBL 2525 M30 65HPG1/8	KH57209	30	L	G1/8	65	25	25	12	25	3,0	150	54	45	12
P92 A CXCBR 2020 K30 65HPG1/8	KH57211	30	R	G1/8	65	20	20	17	20	3,0	125	54	45	12
P92 A CXCBR 2525 M30 65HPG1/8	KH57213	30	R	G1/8	65	25	25	12	25	3,0	150	54	45	12

Inserti
Catalogo GripLock in vigore
e nel presente volantino



p. 56-65
p. 2



p. 66



p. 68-75
p. 2



hard machining
p. 78-80

CONDIZIONI E TERMINI COMMERCIALI

Offerta valida dal 20.10.2025 al 23.1.2026.
Promozione non cumulabile con altre offerte speciali.
Non verranno accettati ordini a programma.
Non verranno accettate modifiche agli ordini come cancellazioni, cambi e resi.
Salvo errori ed eventuali modifiche.



SKHACT25SX1-I



Sorma S.p.A. Socio Unico / Via Don F. Tosatto, 8 / 30174 Mestre - Venezia
+39 041.959179 / cuttingsolutions@sorma.net

www.sorma.net