

DXP

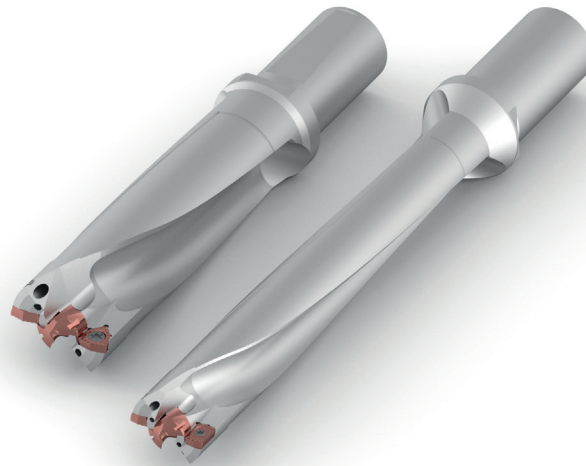
Combined indexable+exchangeable head drilling system for extra deep holes

Application



- | | |
|--|---|
| <ul style="list-style-type: none"> • Flat surface • Concave surface • Convex surface • Stacked plates • Pipes | <ul style="list-style-type: none"> • Flache Flächen • Konkave Flächen • Konvexe Flächen • Paketbohren • Rohre |
| <ul style="list-style-type: none"> • Superfici piane • Superfici concave • Superfici convesse • Foratura a pacco • Tubi | <ul style="list-style-type: none"> • Surfaces planes • Surfaces concaves • Surfaces convexes • Perçage en empilement • Tubes |

Application range - ISO 513



Features and benefits

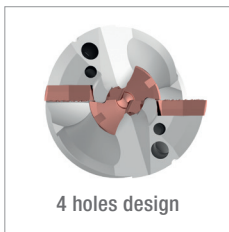
- | | |
|--|--|
| <ul style="list-style-type: none"> • High performance drilling system for large diameter holes. • Pilot drill enables better centering in deep hole drilling also available in 3xD for those looking for better centering • Suitable for high feed drilling. | <ul style="list-style-type: none"> • Modulares System für tiefe Hochleistungsbohrungen. • Die Zentrierspitze ermöglicht eine bessere Zentrierung beim Bohren von tiefen Löchern (auch in 3xD erhältlich für eine noch bessere Zentrierung). • Ideal für große Vorschübe bei mechanisch befestigten Lösungen. |
| <ul style="list-style-type: none"> • Sistema per forature di grandi diametri a elevate prestazioni. • La punta pilota consente un migliore centraggio nella foratura di fori profondi (disponibile anche in 3xD per quanti cercano un migliore centraggio). • Scelta ideale per foratura con elevati avanzamenti. | <ul style="list-style-type: none"> • Système modulaire de perçage haute performance pour trous profonds • Le foret pilote permet un meilleur centrage lors du perçage de trous profonds (également disponible en 3xD pour les personnes qui souhaitent optimiser le centrage). • Choix idéal pour des avances élevées |

DXP

Combined indexable+exchangeable head drilling system for extra deep holes

Drilling holders

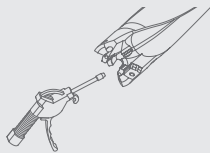
- Weldon shank with internal coolant
- 3/ 6/ 8/ 10xD available from D30 to D60
- Special length and step type available upon request
- Attacco Weldon con refrigerante interno
- 3/ 6/ 8/ 10xD disponibili da D30 a D60
- Lunghezze speciali e geometria a gradino disponibili su richiesta
- Weldon-Aufnahme mit internem Kühlschmiermittel
- 3/ 6/ 8/ 10xD erhältlich von D30 bis D60
- Sonderlängen und Stufenkörper auf Anfrage erhältlich
- Queue Weldon avec arrosage interne
- Disponibles en 3/ 6/ 8/ 10xD du D30 au D60
- Longueurs spéciales et corps « étagés » disponibles sur demande



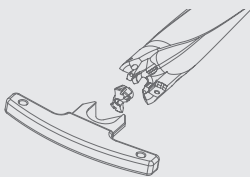
Inserts

- Pilot head available from D15 to D28 with HC geometry for perfect self-centering and reduced drilling force.
- Peripheral insert featuring CS geometry (Chip Splitter) designed to efficiently break and eject chips
- Zentrierspitzen von D15 bis D28 mit HC-Geometrie für perfekte Selbstzentrierung und geringe Bohrkräfte erhältlich.
- Periphere Wendeschneidplatten mit CS (Chip Splitter)-Geometrie zur effektiven Zerteilung und Abfuhr von Spänen
- Punta pilota disponibile da D15 a D28 con geometria HC per un perfetto autocentraggio e ridotte forze di foratura.
- Inserti periferici con geometria CS (Chip Splitter) progettati per rompere ed evacuare efficacemente i trucioli
- Foret pilote disponible du D15 au D28 à géométrie HC pour un auto-centrage parfait avec des efforts de coupe moindre.
- Plaquettes périphériques à géométrie CS (Chip Splitter) conçue pour fragmenter et évacuer efficacement les copeaux

DRILLING HEADS INSTALLATION



- Clean pocket with air blast.
Put insert into drill holder.
- Pulire la sede con aria compressa.
Posizionare l'inserto nella sede.
- Die Tasche mit Druckluft reinigen.
Die Wendeschneidplatten in die Aufnahme einsetzen.
- Nettoyer le logement à l'air comprimé.
Positionner la plaquette dans le logement.



- Set wrench into slots on insert flanks.
Slowly turn the wrench clockwise until stop.
- Posizionare la chiave nelle guide sui fianchi della cuspidale.
Girare lentamente la chiave in senso orario fino all'arresto.
- Den Schlüssel in die Führungen an den Seiten der Wendeschneidplatte einsetzen.
Den Schlüssel langsam im Uhrzeigersinn drehen, bis zum Anschlag.
- Placer la clé dans les guides sur les côtés de la plaquette
Tourner lentement la clé dans le sens horaire jusqu'en butée.



INDEXABLE

A - TURNING

B - THREADING

C - GROOVING

D - MILLING

E - DRILLING

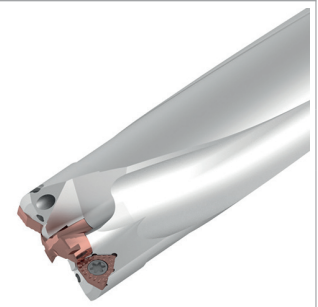
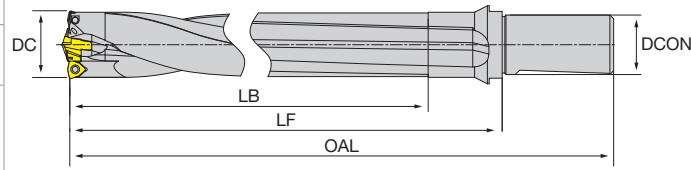
F - ACCESSORIES

G - SPARE PARTS

NT-DXP-03

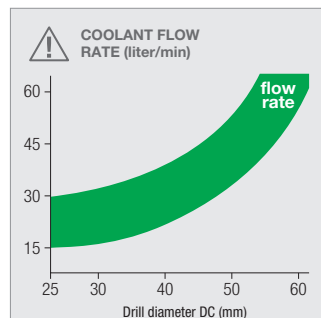
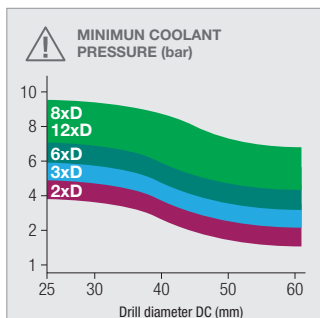
DEX pilot

- All with 4 coolant holes
- Please select inserts according to columns PILOT and MID
- Peripheral inserts for D30 and D31 have a different shape compared to all the others
- Under **stable conditions**, hole tolerance **0/+0.10 mm**

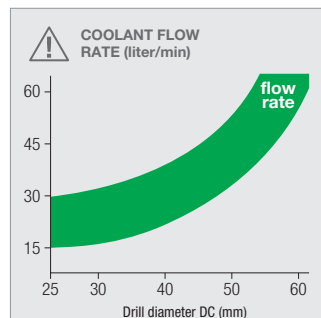
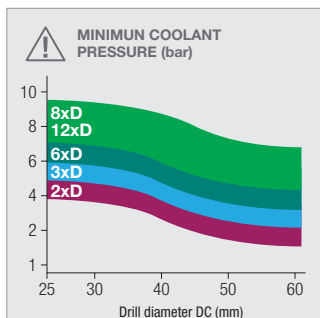


Designation	DC	DCON	OAL	LF	LB	PILOT	MID				Stock
NT-DXP-03 D30-S32-P16E04	30	32	185	125	99.9	DXP-P16	DXP-E04				⊙
NT-DXP-03 D31-S32-P17E04	31	32	189	129	103.9	DXP-P17	DXP-E04				⊙
NT-DXP-03 D32-S32-P15E05	32	32	194	134	105.7	DXP-P15	DXP-E05				⊙
NT-DXP-03 D33-S32-P16E05	33	32	196	136	107.8	DXP-P16	DXP-E05				⊙
NT-DXP-03 D34-S32-P16E05	34	32	199	139	110.8	DXP-P16	DXP-E05				⊙
NT-DXP-03 D35-S32-P18E05	35	32	204	144	116.5	DXP-P18	DXP-E05				⊙
NT-DXP-03 D36-S32-P18E05	36	32	206	146	118.5	DXP-P18	DXP-E05				⊙
NT-DXP-03 D37-S32-P16E06	37	32	209	149	119.8	DXP-P16	DXP-E06				⊙
NT-DXP-03 D38-S32-P16E06	38	32	214	154	122.8	DXP-P16	DXP-E06				⊙
NT-DXP-03 D39-S32-P18E06	39	32	217	157	127.5	DXP-P18	DXP-E06				⊙
NT-DXP-03 D40-S32-P18E06	40	32	234	164	131.5	DXP-P18	DXP-E06				⊙
NT-DXP-03 D41-S32-P19E06	41	32	236	166	134	DXP-P19	DXP-E06				⊙
NT-DXP-03 D42-S50-P19E06	42	50	240	170	137	DXP-P19	DXP-E06				⊙
NT-DXP-03 D43-S50-P16E08	43	50	243	173	137.8	DXP-P16	DXP-E08				⊙
NT-DXP-03 D44-S50-P18E08	44	50	246	176	142.5	DXP-P18	DXP-E08				⊙
NT-DXP-03 D45-S50-P18E08	45	50	249	179	145.5	DXP-P18	DXP-E08				⊙
NT-DXP-03 D46-S50-P19E08	46	50	252	182	149	DXP-P19	DXP-E08				⊙
NT-DXP-03 D47-S50-P20E08	47	50	255	185	152.6	DXP-P20	DXP-E08				⊙
NT-DXP-03 D48-S50-P21E08	48	50	259	189	156.1	DXP-P21	DXP-E08				⊙
NT-DXP-03 D49-S50-P22E08	49	50	262	192	159.7	DXP-P22	DXP-E08				⊙
NT-DXP-03 D50-S50-P23E08	50	50	265	195	163.3	DXP-P23	DXP-E08				⊙
NT-DXP-03 D51-S50-P24E08	51	50	269	199	167.9	DXP-P24	DXP-E08				⊙
NT-DXP-03 D52-S50-P25E08	52	50	280	210	170.5	DXP-P25	DXP-E08				⊙
NT-DXP-03 D53-S50-P26E08	53	50	274	204	173.5	DXP-P26	DXP-E08				⊙
NT-DXP-03 D54-S50-P27E08	54	50	278	208	178.5	DXP-P27	DXP-E08				⊙
NT-DXP-03 D55-S50-P28E08	55	50	280	210	180.5	DXP-P28	DXP-E08				⊙
NT-DXP-03 D56-S50-P20E10	56	50	283	213	179.6	DXP-P20	DXP-E10				⊙
NT-DXP-03 D57-S50-P21E10	57	50	286	216	183.1	DXP-P21	DXP-E10				⊙
NT-DXP-03 D58-S50-P22E10	58	50	289	219	186.7	DXP-P22	DXP-E10				⊙
NT-DXP-03 D59-S50-P23E10	59	50	292	222	190.3	DXP-P23	DXP-E10				⊙
NT-DXP-03 D60-S50-P24E10	60	50	295	225	193.9	DXP-P24	DXP-E10				⊙

★ 1st choice, ☆ suitable, ● stock standard, ⊙ non-stock standard (no MOQ), ○ non-stock standard (MOQ), ▲ upcoming product, ▽ stock exhaustion



Spare parts	Wrench	Insert screw	Flag wrench
NT-DXP-03 (DC 30)	NT-WR1416	NT-ST25080T09	NT-FTB09
NT-DXP-03 (DC 31)	NT-WR1720	NT-ST25080T09	NT-FTB09
NT-DXP-03 (DC 32-34)	NT-WR1416	NT-ST30080T10	NT-FTB10
NT-DXP-03 (DC 35-36)	NT-WR1720	NT-ST30080T10	NT-FTB10
NT-DXP-03 (DC 37-38)	NT-WR1416	NT-ST40100T15	NT-FTB15
NT-DXP-03 (DC 39-42)	NT-WR1720	NT-ST40100T15	NT-FTB15
NT-DXP-03 (DC 43)	NT-WR1416	NT-ST40100T15	NT-FTB15
NT-DXP-03 (DC 44-47)	NT-WR1720	NT-ST40100T15	NT-FTB15
NT-DXP-03 (DC 48-55)	NT-WR2128	NT-ST40100T15	NT-FTB15
NT-DXP-03 (DC 56)	NT-WR1720	NT-ST50100T20	NT-FTB20
NT-DXP-03 (DC 57-60)	NT-WR2128	NT-ST50100T20	NT-FTB20



INDEXABLE

A - TURNING

B - THREADING

C - GROOVING

D - MILLING

E - DRILLING

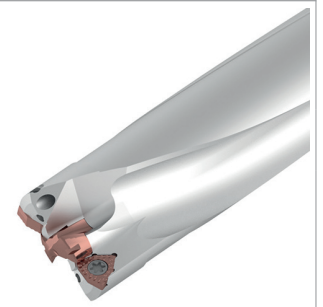
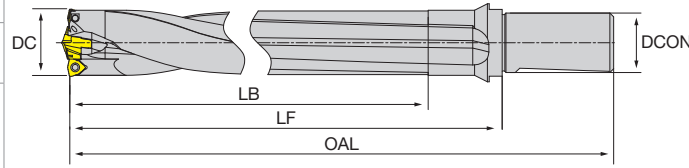
F - ACCESSORIES

G - SPARE PARTS

NT-DXP-06

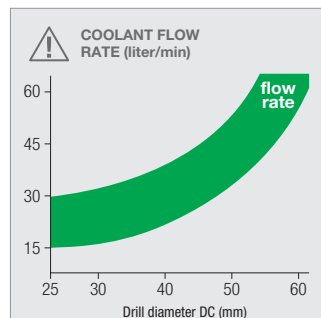
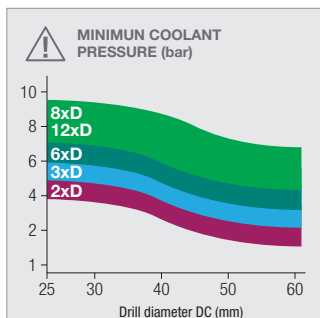
DEX pilot

- All with 4 coolant holes
- Please select inserts according to columns PILOT and MID
- Peripheral inserts for D30 and D31 have a different shape compared to all the others
- Under **stable conditions**, hole tolerance **0/+0.10 mm**



Designation	DC	DCON	OAL	LF	LB	PILOT	MID				Stock
NT-DXP-06 D30-S32-P16E04	30	32	275	215	189.9	DXP-P16	DXP-E04				⊙
NT-DXP-06 D31-S32-P17E04	31	32	282	222	196.9	DXP-P17	DXP-E04				⊙
NT-DXP-06 D32-S32-P15E05	32	32	289	229	200.7	DXP-P15	DXP-E05				⊙
NT-DXP-06 D33-S32-P16E05	33	32	295	235	206.8	DXP-P16	DXP-E05				⊙
NT-DXP-06 D34-S32-P16E05	34	32	301	241	212.8	DXP-P16	DXP-E05				⊙
NT-DXP-06 D35-S32-P18E05	35	32	309	249	221.5	DXP-P18	DXP-E05				⊙
NT-DXP-06 D36-S32-P18E05	36	32	314	254	226.5	DXP-P18	DXP-E05				⊙
NT-DXP-06 D37-S32-P16E06	37	32	320	260	230.8	DXP-P16	DXP-E06				⊙
NT-DXP-06 D38-S32-P16E06	38	32	328	268	236.8	DXP-P16	DXP-E06				⊙
NT-DXP-06 D39-S32-P18E06	39	32	334	274	244.5	DXP-P18	DXP-E06				⊙
NT-DXP-06 D40-S32-P18E06	40	32	353	283	250.5	DXP-P18	DXP-E06				⊙
NT-DXP-06 D41-S32-P19E06	41	32	359	289	257	DXP-P19	DXP-E06				⊙
NT-DXP-06 D42-S50-P19E06	42	50	366	296	263	DXP-P19	DXP-E06				⊙
NT-DXP-06 D43-S50-P16E08	43	50	372	302	266.8	DXP-P16	DXP-E08				⊙
NT-DXP-06 D44-S50-P18E08	44	50	378	308	274.5	DXP-P18	DXP-E08				⊙
NT-DXP-06 D45-S50-P18E08	45	50	384	314	280.5	DXP-P18	DXP-E08				⊙
NT-DXP-06 D46-S50-P19E08	46	50	390	320	287	DXP-P19	DXP-E08				⊙
NT-DXP-06 D47-S50-P20E08	47	50	396	326	293.6	DXP-P20	DXP-E08				⊙
NT-DXP-06 D48-S50-P21E08	48	50	403	333	300.1	DXP-P21	DXP-E08				⊙
NT-DXP-06 D49-S50-P22E08	49	50	409	339	306.7	DXP-P22	DXP-E08				⊙
NT-DXP-06 D50-S50-P23E08	50	50	415	345	313.3	DXP-P23	DXP-E08				⊙
NT-DXP-06 D51-S50-P24E08	51	50	421	351	319.9	DXP-P24	DXP-E08				⊙
NT-DXP-06 D52-S50-P25E08	52	50	427	357	326.5	DXP-P25	DXP-E08				⊙
NT-DXP-06 D53-S50-P26E08	53	50	433	363	332.5	DXP-P26	DXP-E08				⊙
NT-DXP-06 D54-S50-P27E08	54	50	440	370	340.5	DXP-P27	DXP-E08				⊙
NT-DXP-06 D55-S50-P28E08	55	50	445	375	345.5	DXP-P28	DXP-E08				⊙
NT-DXP-06 D56-S50-P20E10	56	50	451	381	347.6	DXP-P20	DXP-E10				⊙
NT-DXP-06 D57-S50-P21E10	57	50	457	387	354.1	DXP-P21	DXP-E10				⊙
NT-DXP-06 D58-S50-P22E10	58	50	463	393	360.7	DXP-P22	DXP-E10				⊙
NT-DXP-06 D59-S50-P23E10	59	50	469	399	367.3	DXP-P23	DXP-E10				⊙
NT-DXP-06 D60-S50-P24E10	60	50	475	405	373.9	DXP-P24	DXP-E10				⊙

★ 1st choice, ☆ suitable, ● stock standard, ⊙ non-stock standard (no MOQ), ○ non-stock standard (MOQ), ▲ upcoming product, ▽ stock exhaustion



Spare parts	Wrench	Insert screw	Flag wrench
NT-DXP-06 (DC 30)	NT-WR1416	NT-ST25080T09	NT-FTB09
NT-DXP-06 (DC 31)	NT-WR1720	NT-ST25080T09	NT-FTB09
NT-DXP-06 (DC 32-34)	NT-WR1416	NT-ST30080T10	NT-FTB10
NT-DXP-06 (DC 35-36)	NT-WR1720	NT-ST30080T10	NT-FTB10
NT-DXP-06 (DC 37-38)	NT-WR1416	NT-ST40100T15	NT-FTB15
NT-DXP-06 (DC 39-42)	NT-WR1720	NT-ST40100T15	NT-FTB15
NT-DXP-06 (DC 43)	NT-WR1416	NT-ST40100T15	NT-FTB15
NT-DXP-06 (DC 44-47)	NT-WR1720	NT-ST40100T15	NT-FTB15
NT-DXP-06 (DC 48-55)	NT-WR2128	NT-ST40100T15	NT-FTB15
NT-DXP-06 (DC 56)	NT-WR1720	NT-ST50100T20	NT-FTB20
NT-DXP-06 (DC 57-60)	NT-WR2128	NT-ST50100T20	NT-FTB20

INDEXABLE

A - TURNING

B - THREADING

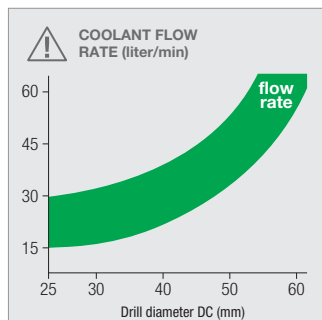
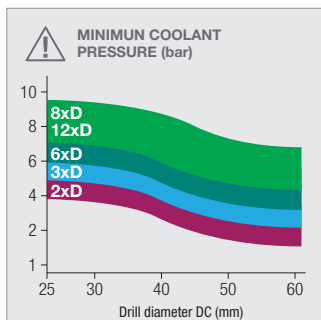
C - GROOVING

D - MILLING

E - DRILLING

F - ACCESSORIES

G - SPARE PARTS



INDEXABLE

A - TURNING

B - THREADING

C - GROOVING

D - MILLING

E - DRILLING

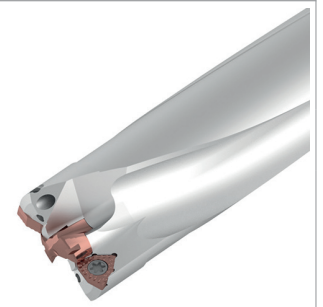
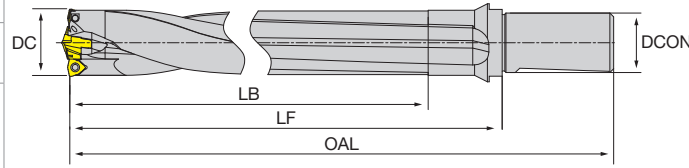
F - ACCESSORIES

G - SPARE PARTS

NT-DXP-08

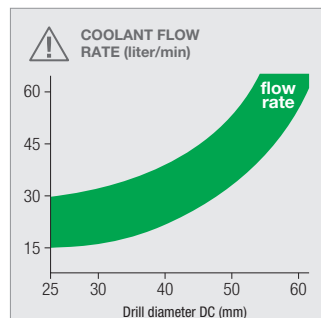
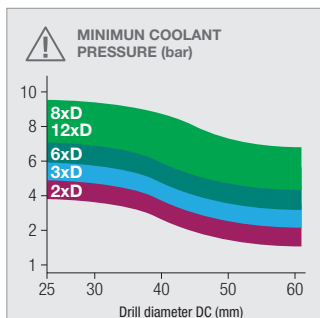
DEX pilot

- All with 4 coolant holes
- Please select inserts according to columns PILOT and MID
- Peripheral inserts for D30 and D31 have a different shape compared to all the others
- Under **stable conditions**, hole tolerance **0/+0.10 mm**

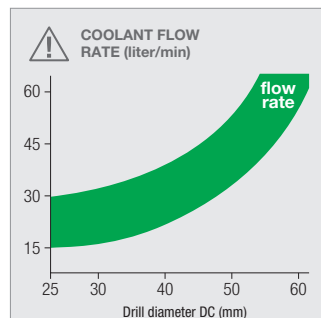
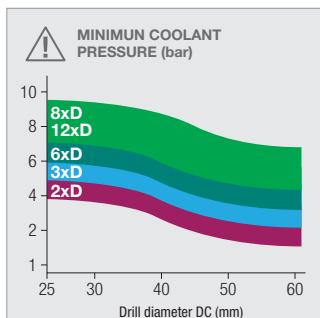


Designation	DC	DCON	OAL	LF	LB	PILOT	MID				Stock
NT-DXP-08 D30-S32-P16E04	30	32	335	275	249.9	DXP-P16	DXP-E04				●
NT-DXP-08 D31-S32-P17E04	31	32	344	284	258.9	DXP-P17	DXP-E04				●
NT-DXP-08 D32-S32-P15E05	32	32	353	293	264.7	DXP-P15	DXP-E05				●
NT-DXP-08 D33-S32-P16E05	33	32	361	301	272.8	DXP-P16	DXP-E05				●
NT-DXP-08 D34-S32-P16E05	34	32	369	309	280.8	DXP-P16	DXP-E05				●
NT-DXP-08 D35-S32-P18E05	35	32	379	319	291.5	DXP-P18	DXP-E05				●
NT-DXP-08 D36-S32-P18E05	36	32	386	326	298.5	DXP-P18	DXP-E05				●
NT-DXP-08 D37-S32-P16E06	37	32	394	334	304.8	DXP-P16	DXP-E06				●
NT-DXP-08 D38-S32-P16E06	38	32	404	344	312.8	DXP-P16	DXP-E06				●
NT-DXP-08 D39-S32-P18E06	39	32	412	352	322.5	DXP-P18	DXP-E06				●
NT-DXP-08 D40-S32-P18E06	40	32	433	363	330.5	DXP-P18	DXP-E06				●
NT-DXP-08 D41-S32-P19E06	41	32	441	371	339	DXP-P19	DXP-E06				●
NT-DXP-08 D42-S50-P19E06	42	50	450	380	347	DXP-P19	DXP-E06				●
NT-DXP-08 D43-S50-P16E08	43	50	458	388	352.8	DXP-P16	DXP-E08				●
NT-DXP-08 D44-S50-P18E08	44	50	466	396	362.5	DXP-P18	DXP-E08				●
NT-DXP-08 D45-S50-P18E08	45	50	474	404	370.5	DXP-P18	DXP-E08				●
NT-DXP-08 D46-S50-P19E08	46	50	482	412	379	DXP-P19	DXP-E08				●
NT-DXP-08 D47-S50-P20E08	47	50	490	420	387.6	DXP-P20	DXP-E08				●
NT-DXP-08 D48-S50-P21E08	48	50	499	429	396.1	DXP-P21	DXP-E08				●
NT-DXP-08 D49-S50-P22E08	49	50	507	437	404.7	DXP-P22	DXP-E08				●
NT-DXP-08 D50-S50-P23E08	50	50	515	445	413.3	DXP-P23	DXP-E08				●
NT-DXP-08 D51-S50-P24E08	51	50	523	453	421.9	DXP-P24	DXP-E08				●
NT-DXP-08 D52-S50-P25E08	52	50	531	461	430.5	DXP-P25	DXP-E08				●
NT-DXP-08 D53-S50-P26E08	53	50	539	469	438.5	DXP-P26	DXP-E08				●
NT-DXP-08 D54-S50-P27E08	54	50	548	478	448.5	DXP-P27	DXP-E08				●
NT-DXP-08 D55-S50-P28E08	55	50	555	485	455.5	DXP-P28	DXP-E08				●
NT-DXP-08 D56-S50-P20E10	56	50	563	493	459.6	DXP-P20	DXP-E10				●
NT-DXP-08 D57-S50-P21E10	57	50	571	501	468.1	DXP-P21	DXP-E10				●
NT-DXP-08 D58-S50-P22E10	58	50	579	509	476.7	DXP-P22	DXP-E10				●
NT-DXP-08 D59-S50-P23E10	59	50	587	517	485.3	DXP-P23	DXP-E10				●
NT-DXP-08 D60-S50-P24E10	60	50	595	525	493.9	DXP-P24	DXP-E10				●

★ 1st choice, ☆ suitable, ● stock standard, ● non-stock standard (no MOQ), ○ non-stock standard (MOQ), ▲ upcoming product, ▽ stock exhaustion



Spare parts	Wrench	Insert screw	Flag wrench
NT-DXP-08 (DC 30)	NT-WR1416	NT-ST25080T09	NT-FTB09
NT-DXP-08 (DC 31)	NT-WR1720	NT-ST25080T09	NT-FTB09
NT-DXP-08 (DC 32-34)	NT-WR1416	NT-ST30080T10	NT-FTB10
NT-DXP-08 (DC 35-36)	NT-WR1720	NT-ST30080T10	NT-FTB10
NT-DXP-08 (DC 37-38)	NT-WR1416	NT-ST40100T15	NT-FTB15
NT-DXP-08 (DC 39-42)	NT-WR1720	NT-ST40100T15	NT-FTB15
NT-DXP-08 (DC 43)	NT-WR1416	NT-ST40100T15	NT-FTB15
NT-DXP-08 (DC 44-47)	NT-WR1720	NT-ST40100T15	NT-FTB15
NT-DXP-08 (DC 48-55)	NT-WR2128	NT-ST40100T15	NT-FTB15
NT-DXP-08 (DC 56)	NT-WR1720	NT-ST50100T20	NT-FTB20
NT-DXP-08 (DC 57-60)	NT-WR2128	NT-ST50100T20	NT-FTB20



INDEXABLE

A - TURNING

B - THREADING

C - GROOVING

D - MILLING

E - DRILLING

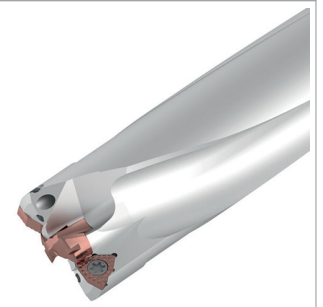
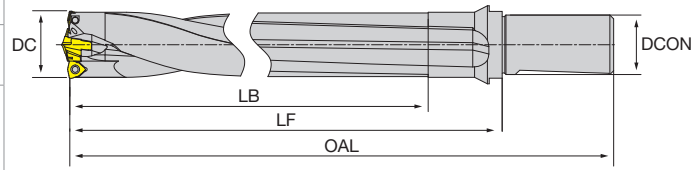
F - ACCESSORIES

G - SPARE PARTS

NT-DXP-10

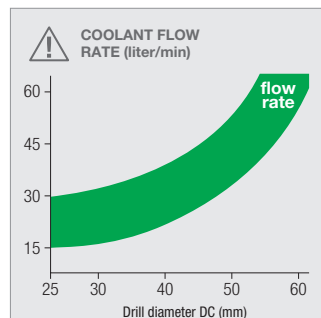
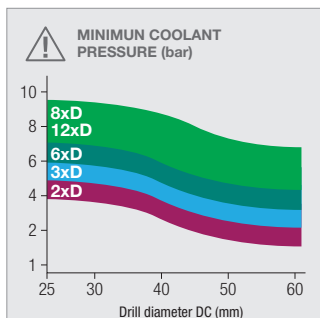
DEX pilot

- All with 4 coolant holes
- Please select inserts according to columns PILOT and MID
- Peripheral inserts for D30 and D31 have a different shape compared to all the others
- Under **stable conditions**, hole tolerance **0/+0.10 mm**



Designation	DC	DCON	OAL	LF	LB	PILOT	MID				Stock
NT-DXP-10 D30-S32-P16E04	30	32	395	335	319.9	DXP-P16	DXP-E04				●
NT-DXP-10 D31-S32-P17E04	31	32	406	346	320.9	DXP-P17	DXP-E04				●
NT-DXP-10 D32-S32-P15E05	32	32	417	357	328.7	DXP-P15	DXP-E05				●
NT-DXP-10 D33-S32-P16E05	33	32	427	367	338.8	DXP-P16	DXP-E05				●
NT-DXP-10 D34-S32-P16E05	34	32	437	377	328.8	DXP-P16	DXP-E05				●
NT-DXP-10 D35-S32-P18E05	35	32	448	388	360.5	DXP-P18	DXP-E05				●
NT-DXP-10 D36-S32-P18E05	36	32	458	398	370.5	DXP-P18	DXP-E05				●
NT-DXP-10 D37-S32-P16E06	37	32	468	408	378.8	DXP-P16	DXP-E06				●
NT-DXP-10 D38-S32-P16E06	38	32	480	420	388.8	DXP-P16	DXP-E06				●
NT-DXP-10 D39-S32-P18E06	39	32	490	430	400.5	DXP-P18	DXP-E06				●
NT-DXP-10 D40-S32-P18E06	40	32	513	443	410.5	DXP-P18	DXP-E06				●
NT-DXP-10 D41-S32-P19E06	41	32	523	453	421	DXP-P19	DXP-E06				●
NT-DXP-10 D42-S50-P19E06	42	50	534	464	431	DXP-P19	DXP-E06				●
NT-DXP-10 D43-S50-P16E08	43	50	544	474	438.8	DXP-P16	DXP-E08				●
NT-DXP-10 D44-S50-P18E08	44	50	554	484	450.5	DXP-P18	DXP-E08				●
NT-DXP-10 D45-S50-P18E08	45	50	564	494	460.5	DXP-P18	DXP-E08				●
NT-DXP-10 D46-S50-P19E08	46	50	574	504	471	DXP-P19	DXP-E08				●
NT-DXP-10 D47-S50-P20E08	47	50	584	514	481.6	DXP-P20	DXP-E08				●
NT-DXP-10 D48-S50-P21E08	48	50	595	525	492.1	DXP-P21	DXP-E08				●
NT-DXP-10 D49-S50-P22E08	49	50	605	535	502.7	DXP-P22	DXP-E08				●
NT-DXP-10 D50-S50-P23E08	50	50	615	545	513.3	DXP-P23	DXP-E08				●
NT-DXP-10 D51-S50-P24E08	51	50	625	555	523.9	DXP-P24	DXP-E08				●
NT-DXP-10 D52-S50-P25E08	52	50	635	565	534.5	DXP-P25	DXP-E08				●
NT-DXP-10 D53-S50-P26E08	53	50	645	575	544.5	DXP-P26	DXP-E08				●
NT-DXP-10 D54-S50-P27E08	54	50	656	586	556.5	DXP-P27	DXP-E08				●
NT-DXP-10 D55-S50-P28E08	55	50	665	595	565.5	DXP-P28	DXP-E08				●
NT-DXP-10 D56-S50-P20E10	56	50	675	605	571.6	DXP-P20	DXP-E10				●
NT-DXP-10 D57-S50-P21E10	57	50	685	615	582.1	DXP-P21	DXP-E10				●
NT-DXP-10 D58-S50-P22E10	58	50	695	625	592.7	DXP-P22	DXP-E10				●
NT-DXP-10 D59-S50-P23E10	59	50	705	635	603.3	DXP-P23	DXP-E10				●
NT-DXP-10 D60-S50-P24E10	60	50	715	645	613.9	-	DXP-E10				●

★ 1st choice, ☆ suitable, ● stock standard, ● non-stock standard (no MOQ), ○ non-stock standard (MOQ), ▲ upcoming product, ▽ stock exhaustion



Spare parts	Wrench	Insert screw	Flag wrench
NT-DXP-10 (DC 30)	NT-WR1416	NT-ST25080T09	NT-FTB09
NT-DXP-10 (DC 31)	NT-WR1720	NT-ST25080T09	NT-FTB09
NT-DXP-10 (DC 32-34)	NT-WR1416	NT-ST30080T10	NT-FTB10
NT-DXP-10 (DC 35-36)	NT-WR1720	NT-ST30080T10	NT-FTB10
NT-DXP-10 (DC 37-38)	NT-WR1416	NT-ST40100T15	NT-FTB15
NT-DXP-10 (DC 39-42)	NT-WR1720	NT-ST40100T15	NT-FTB15
NT-DXP-10 (DC 43)	NT-WR1416	NT-ST40100T15	NT-FTB15
NT-DXP-10 (DC 44-47)	NT-WR1720	NT-ST40100T15	NT-FTB15
NT-DXP-10 (DC 48-55)	NT-WR2128	NT-ST40100T15	NT-FTB15
NT-DXP-10 (DC 56)	NT-WR1720	NT-ST50100T20	NT-FTB20
NT-DXP-10 (DC 57-60)	NT-WR2128	NT-ST50100T20	NT-FTB20

INDEXABLE

A - TURNING

B - THREADING

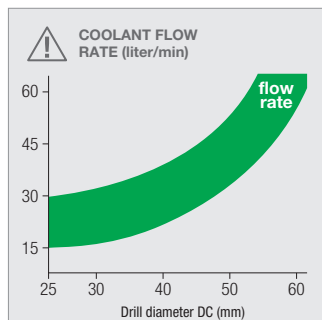
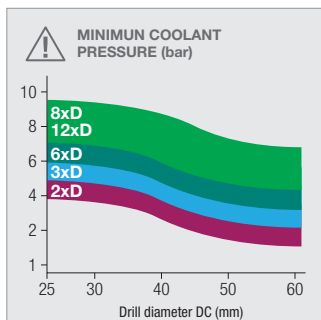
C - GROOVING

D - MILLING

E - DRILLING

F - ACCESSORIES

G - SPARE PARTS



ISO 513	MATERIAL	HARDNESS HB	L/D	JP5725				
				min	start	max		
P1 - P2	Free cutting steel and low carbon (ex. 1.0715/9 smn 28/avp, 1.0503/c45)	≤ 200	3xD - 6xD	80	120	160		
			8xD	65	100	135		
			10xD	55	85	115		
P3 - P4	Medium and high alloy steel (ex. 1.7225/42 CrMo 4, 1.3505/100 Cr 6)	200 ÷ 300	3xD - 6xD	60	90	120		
			8xD	50	75	100		
			10xD	40	60	80		
P5 - P6	High tensile strength and tool steel (ex. 1.2344/X 40 CrMoV 5 1/ORVAR, Hardox400®)	300 ÷ 400	3xD - 6xD	40	60	80		
			8xD	35	50	65		
			10xD	30	40	50		
K1	Grey cast iron (ex. 0.6025/GG 25/EN-GJL-250)	150 ÷ 250	3xD - 6xD	80	110	140		
			8xD	70	90	110		
			10xD	60	80	100		
K2	Nodular cast iron (ex. 0.7050/GGG 50/EN-GJS-500-7)	150 ÷ 350	3xD - 6xD	80	100	120		
			8xD	70	90	110		
			10xD	60	80	100		

Complete workpiece materials p. M1.

ISO 513	MATERIAL	HARDNESS HB	L/D	DC 30.00 ÷ 35.00			DC 36.00 ÷ 40.00			DC 41.00 ÷ 45.00		
				min	start	max	min	start	max	min	start	max
P1 - P2	Free cutting steel and low carbon (ex. 1.0715/9 smn 28/avp, 1.0503/c45)	≤ 200	3xD - 6xD	0.16	0.22	0.28	0.18	0.25	0.32	0.18	0.27	0.36
			8xD	0.12	0.17	0.22	0.14	0.20	0.26	0.14	0.21	0.28
			10xD	0.10	0.15	0.20	0.12	0.17	0.22	0.12	0.18	0.24
P3 - P4	Medium and high alloy steel (ex. 1.7225/42 CrMo 4, 1.3505/100 Cr 6)	200 ÷ 300	3xD - 6xD	0.18	0.25	0.32	0.20	0.28	0.36	0.20	0.31	0.42
			8xD	0.14	0.20	0.26	0.16	0.22	0.28	0.16	0.25	0.34
			10xD	0.12	0.17	0.22	0.14	0.19	0.24	0.14	0.22	0.30
P5 - P6	High tensile strength and tool steel (ex. 1.2344/X 40 CrMoV 5 1/ORVAR, Hardox400®)	300 ÷ 400	3xD - 6xD	0.18	0.24	0.30	0.20	0.27	0.34	0.20	0.30	0.40
			8xD	0.14	0.19	0.24	0.16	0.21	0.26	0.16	0.24	0.32
			10xD	0.12	0.16	0.20	0.14	0.18	0.22	0.14	0.21	0.28
K1	Grey cast iron (ex. 0.6025/GG 25/EN-GJL-250)	150 ÷ 250	3xD - 6xD	0.20	0.27	0.34	0.22	0.30	0.38	0.22	0.33	0.44
			8xD	0.16	0.21	0.26	0.18	0.24	0.30	0.18	0.27	0.36
			10xD	0.14	0.18	0.22	0.16	0.21	0.26	0.16	0.23	0.30
K2	Nodular cast iron (ex. 0.7050/GGG 50/EN-GJS-500-7)	150 ÷ 350	3xD - 6xD	0.16	0.22	0.28	0.18	0.24	0.30	0.18	0.28	0.36
			8xD	0.12	0.17	0.22	0.14	0.19	0.24	0.14	0.21	0.28
			10xD	0.10	0.15	0.20	0.12	0.16	0.20	0.12	0.18	0.24

Complete workpiece materials p. M1.

(fn: mm/rev)

DC 46.00 ÷ 50.00			DC 51.00 ÷ 55.00			DC 56.00 ÷ 60.00					
min	start	max	min	start	max	min	start	max			
0.20	0.30	0.40	0.20	0.32	0.44	0.22	0.34	0.46			
0.16	0.24	0.32	0.16	0.26	0.36	0.18	0.27	0.36			
0.14	0.21	0.28	0.14	0.22	0.30	0.16	0.24	0.32			
0.22	0.29	0.46	0.22	0.36	0.50	0.24	0.38	0.52			
0.18	0.27	0.36	0.18	0.27	0.40	0.20	0.31	0.42			
0.16	0.24	0.32	0.16	0.26	0.36	0.16	0.26	0.36			
0.22	0.33	0.44	0.22	0.35	0.48	0.24	0.37	0.50			
0.18	0.27	0.36	0.18	0.28	0.38	0.20	0.30	0.40			
0.16	0.23	0.30	0.16	0.25	0.34	0.16	0.26	0.36			
0.24	0.36	0.48	0.24	0.38	0.52	0.26	0.40	0.54			
0.20	0.29	0.38	0.20	0.31	0.42	0.20	0.32	0.44			
0.16	0.25	0.34	0.16	0.26	0.36	0.18	0.28	0.38			
0.20	0.29	0.38	0.20	0.31	0.42	0.20	0.32	0.44			
0.16	0.23	0.30	0.16	0.25	0.34	0.16	0.26	0.36			
0.14	0.20	0.26	0.14	0.22	0.30	0.14	0.22	0.30			

Complete workpiece materials p. M1.

INDEXABLE

A - TURNING

B - THREADING

C - GROOVING

D - MILLING

E - DRILLING

F - ACCESSORIES

G - SPARE PARTS