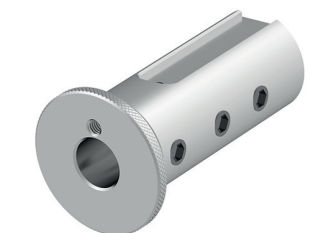
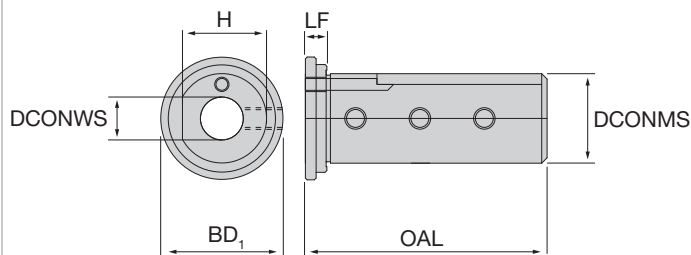
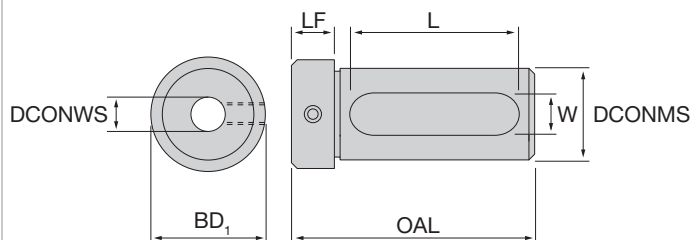
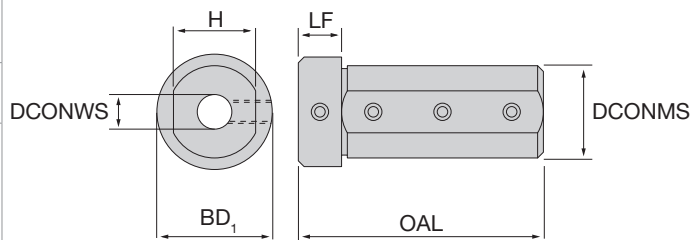


ACCESSORIES

Sleeves .F2

Threaded extensions .F5

NT-SLB



| Designation | DCONWS | DCONMS | OAL | H | LF | BD1 | L | W | | | Stock |
|--------------------------|--------|--------|-----|------|----|-----|---|---|--|--|-------|
| SCREW LOCK SLEEVE | | | | | | | | | | | |
| NT-SLB S03 D16-L62 | 3 | 16 | 62 | 14.5 | 7 | 20 | - | - | | | ⊙ |
| NT-SLB S04 D16-L62 | 4 | 16 | 62 | 14.5 | 7 | 20 | - | - | | | ● |
| NT-SLB S04 D20-L67 | 4 | 20 | 67 | 17.5 | 7 | 27 | - | - | | | ○ |
| NT-SLB S04 D32-L85 | 4 | 32 | 80 | 29.5 | 15 | 38 | - | - | | | ● |
| NT-SLB S05 D16-L62 | 5 | 16 | 62 | 14.5 | 7 | 20 | - | - | | | ⊙ |
| NT-SLB S05 D20-L67 | 5 | 20 | 67 | 17.5 | 7 | 27 | - | - | | | ● |
| NT-SLB S05 D32-L85 | 5 | 32 | 85 | 29.5 | 15 | 38 | - | - | | | ○ |
| NT-SLB S05 D40-L100 | 5 | 40 | 100 | 38 | 15 | 46 | - | - | | | ● |
| NT-SLB S06 D16-L62 | 6 | 16 | 62 | 14.5 | 7 | 20 | - | - | | | ● |
| NT-SLB S06 D20-L52 | 6 | 20 | 52 | 17.5 | 7 | 25 | - | - | | | ⊙ |
| NT-SLB S06 D20-L67 | 6 | 20 | 67 | 17.5 | 7 | 27 | - | - | | | ● |
| NT-SLB S06 D32-L85 | 6 | 32 | 85 | 29.5 | 15 | 38 | - | - | | | ○ |
| NT-SLB S06 D40-L100 | 6 | 40 | 100 | 38 | 15 | 46 | - | - | | | ⊙ |
| NT-SLB S07 D20-L67 | 7 | 20 | 67 | 17.5 | 7 | 27 | - | - | | | ⊙ |
| NT-SLB S07 D32-L85 | 7 | 32 | 85 | 29.5 | 15 | 38 | - | - | | | ⊙ |
| NT-SLB S07 D40-L100 | 7 | 40 | 100 | 38 | 15 | 46 | - | - | | | ⊙ |
| NT-SLB S08 D16-L62 | 8 | 16 | 62 | 14.5 | 7 | 20 | - | - | | | ● |
| NT-SLB S08 D20-L52 | 8 | 20 | 52 | 17.5 | 7 | 25 | - | - | | | ● |
| NT-SLB S08 D20-L67 | 8 | 20 | 67 | 17.5 | 7 | 27 | - | - | | | ⊙ |
| NT-SLB S08 D32-L85 | 8 | 32 | 85 | 29.5 | 15 | 38 | - | - | | | ● |
| NT-SLB S08 D40-L100 | 8 | 40 | 100 | 38 | 15 | 46 | - | - | | | ● |
| NT-SLB S08 D50-L100 | 8 | 50 | 100 | 48 | 15 | 58 | - | - | | | ⊙ |
| NT-SLB S10 D20-L52 | 10 | 20 | 52 | 17.5 | 7 | 25 | - | - | | | ● |
| NT-SLB S10 D20-L67 | 10 | 20 | 67 | 17.5 | 7 | 27 | - | - | | | ● |
| NT-SLB S10 D32-L100 | 10 | 32 | 100 | 29.5 | 15 | 38 | - | - | | | ● |

★ 1st choice, ☆ suitable, ● stock standard, ⊙ non-stock standard (no MOQ), ○ non-stock standard (MOQ), ▲ upcoming product, ▽ stock exhaustion

| Designation | DCONWS | DCONMS | OAL | H | LF | BD1 | L | W | | | Stock |
|---------------------------------------|--------|--------|-----|------|----|-----|----|----|--|--|-------|
| NT-SLB S10 D40-L100 | 10 | 40 | 100 | 38 | 15 | 46 | - | - | | | ● |
| NT-SLB S10 D50-L100 | 10 | 50 | 100 | 48 | 15 | 58 | - | - | | | ● |
| NT-SLB S12 D20-L52 | 12 | 20 | 52 | 17.5 | 7 | 25 | - | - | | | ● |
| NT-SLB S12 D20-L67 | 12 | 20 | 67 | 17.5 | 7 | 27 | - | - | | | ○ |
| NT-SLB S12 D32-L100 | 12 | 32 | 100 | 29.5 | 15 | 38 | - | - | | | ● |
| NT-SLB S12 D40-L100 | 12 | 40 | 100 | 38 | 15 | 46 | - | - | | | ● |
| NT-SLB S12 D50-L100 | 12 | 50 | 100 | 48 | 15 | 58 | - | - | | | ● |
| NT-SLB S14 D32-L100 | 14 | 32 | 100 | 29.5 | 15 | 38 | - | - | | | ● |
| NT-SLB S14 D40-L100 | 14 | 40 | 100 | 38 | 15 | 46 | - | - | | | ● |
| NT-SLB S14 D50-L100 | 14 | 50 | 100 | 48 | 15 | 58 | - | - | | | ○ |
| NT-SLB S15 D32-L100 | 15 | 32 | 100 | 29.5 | 15 | 38 | - | - | | | ○ |
| NT-SLB S15 D40-L100 | 15 | 40 | 100 | 38 | 15 | 46 | - | - | | | ○ |
| NT-SLB S16 D32-L100 | 16 | 32 | 100 | 29.5 | 15 | 38 | - | - | | | ● |
| NT-SLB S16 D40-L100 | 16 | 40 | 100 | 38 | 15 | 46 | - | - | | | ● |
| NT-SLB S16 D50-L100 | 16 | 50 | 100 | 48 | 15 | 58 | - | - | | | ● |
| NT-SLB S18 D32-L100 | 18 | 32 | 100 | 29.5 | 15 | 38 | - | - | | | ○ |
| NT-SLB S18 D40-L100 | 18 | 40 | 100 | 38 | 15 | 46 | - | - | | | ○ |
| NT-SLB S18 D50-L100 | 18 | 50 | 100 | 48 | 15 | 58 | - | - | | | ○ |
| NT-SLB S20 D50-L100 | 20 | 50 | 100 | 48 | 15 | 58 | - | - | | | ● |
| NT-SLB S25 D50-L100 | 25 | 50 | 100 | 48 | 15 | 58 | - | - | | | ● |
| TROUGH HOLE SLEEVE | | | | | | | | | | | |
| NT-SLB S10 D16-L62 | 10 | 16 | 62 | - | 7 | 20 | 50 | 11 | | | ○ |
| NT-SLB S12 D16-L62 | 12 | 16 | 62 | - | 7 | 20 | 50 | 11 | | | ○ |
| NT-SLB S14 D20-L67 | 14 | 20 | 67 | - | 7 | 27 | 55 | 13 | | | ○ |
| NT-SLB S14 D25-L64 | 14 | 25 | 64 | - | 6 | 35 | 51 | 12 | | | ○ |
| NT-SLB S15 D20-L67 | 15 | 20 | 67 | - | 7 | 27 | 55 | 13 | | | ○ |
| NT-SLB S15 D25-L64 | 15 | 25 | 64 | - | 6 | 35 | 51 | 12 | | | ○ |
| NT-SLB S16 D20-L52 | 16 | 20 | 52 | - | 7 | 25 | 40 | 11 | | | ● |
| NT-SLB S16 D20-L67 | 16 | 20 | 67 | - | 7 | 27 | 55 | 13 | | | ○ |
| NT-SLB S16 D25-L64 | 16 | 25 | 64 | - | 6 | 35 | 51 | 12 | | | ● |
| NT-SLB S17 D25-L64 | 17 | 25 | 64 | - | 6 | 35 | 51 | 12 | | | ○ |
| NT-SLB S18 D25-L64 | 18 | 25 | 64 | - | 6 | 35 | 51 | 12 | | | ○ |
| NT-SLB S20 D25-L64 | 20 | 25 | 64 | - | 6 | 35 | 51 | 12 | | | ● |
| NT-SLB S20 D32-L100 | 20 | 32 | 100 | - | 15 | 38 | 77 | 14 | | | ● |
| NT-SLB S20 D40-L100 | 20 | 40 | 100 | - | 15 | 46 | 77 | 14 | | | ● |
| NT-SLB S22 D25-L64 | 22 | 25 | 64 | - | 6 | 35 | 51 | 12 | | | ● |
| NT-SLB S22 D32-L100 | 22 | 32 | 100 | - | 15 | 38 | 77 | 14 | | | ○ |
| NT-SLB S22 D40-L100 | 22 | 40 | 100 | - | 15 | 46 | 77 | 14 | | | ● |
| NT-SLB S25 D32-L100 | 25 | 32 | 100 | - | 15 | 38 | 77 | 14 | | | ● |
| NT-SLB S25 D40-L100 | 25 | 40 | 100 | - | 15 | 46 | 77 | 14 | | | ● |
| NT-SLB S32 D40-L100 | 32 | 40 | 100 | - | 15 | 46 | 77 | 14 | | | ● |
| NT-SLB S32 D50-L100 | 32 | 50 | 100 | - | 15 | 46 | 77 | 14 | | | ● |
| NT-SLB S40 D50-L100 | 40 | 50 | 100 | - | 15 | 58 | 77 | 14 | | | ● |
| SCREW LOCK WITH COOLANT SLEEVE | | | | | | | | | | | |
| NT-SLB S04 D25-L64 | 4 | 25 | 64 | 23.5 | 6 | 35 | - | - | | | ○ |
| NT-SLB S05 D25-L64 | 5 | 25 | 64 | 23.5 | 6 | 35 | - | - | | | ○ |
| NT-SLB S06 D25-L64 | 6 | 25 | 64 | 23.5 | 6 | 35 | - | - | | | ○ |
| NT-SLB S07 D25-L64 | 7 | 25 | 64 | 23.5 | 6 | 35 | - | - | | | ○ |
| NT-SLB S08 D25-L64 | 8 | 25 | 64 | 23.5 | 6 | 35 | - | - | | | ● |
| NT-SLB S09 D25-L64 | 9 | 25 | 64 | 23.5 | 6 | 35 | - | - | | | ○ |
| NT-SLB S10 D25-L64 | 10 | 25 | 64 | 23.5 | 6 | 35 | - | - | | | ● |
| NT-SLB S11 D25-L64 | 11 | 25 | 64 | 23.5 | 6 | 35 | - | - | | | ○ |
| NT-SLB S12 D25-L64 | 12 | 25 | 64 | 23.5 | 6 | 35 | - | - | | | ● |

★ 1st choice, ☆ suitable, ● stock standard, ○ non-stock standard (no MOQ), ○ non-stock standard (MOQ), ▲ upcoming product, ▽ stock exhaustion

INDEXABLE

A - TURNING

B - THREADING

C - GROOVING

D - MILLING

E - DRILLING

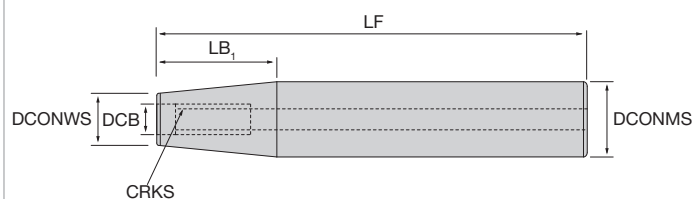
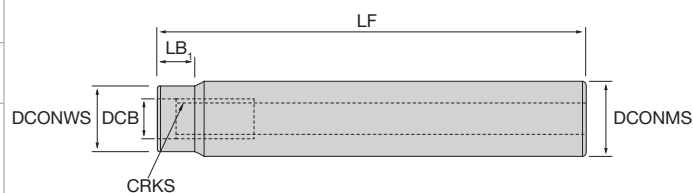
F - ACCESSORIES

G - SPARE PARTS

NT-ARB

Arbors for screw-in cutters

- Steel arbors
- Central coolant hole
- Screw-in cutters connection threads
- Available in conical type and shrink-neck type
- Steel arbors can help absorb vibrations in case of rough surfaces or unstable conditions



| Designation | DCONMS | CRKS | DCONWS | DCB | LF | LB1 | | | | | | Stock |
|--------------------------------|--------|------|--------|------|-----|-----|--|--|--|--|--|-------|
| TAPERED ARBOR | | | | | | | | | | | | |
| NT-ARB D16-M06-150T | 16 | M6 | 11 | 6.5 | 150 | 40 | | | | | | ● |
| NT-ARB D16-M06-200T | 16 | M6 | 11 | 6.5 | 200 | 40 | | | | | | ⊙ |
| NT-ARB D20-M08-200T | 20 | M8 | 14 | 8.5 | 200 | 50 | | | | | | ⊙ |
| NT-ARB D20-M08-250T | 20 | M8 | 14 | 8.5 | 250 | 50 | | | | | | ⊙ |
| NT-ARB D25-M10-200T | 25 | M10 | 18 | 10.5 | 200 | 60 | | | | | | ● |
| NT-ARB D25-M10-250T | 25 | M10 | 18 | 10.5 | 250 | 60 | | | | | | ● |
| NT-ARB D32-M12-250T | 32 | M12 | 23 | 12.5 | 250 | 70 | | | | | | ⊙ |
| NT-ARB D32-M12-350T | 32 | M12 | 23 | 12.5 | 350 | 70 | | | | | | ● |
| ARBOR WITH REDUCED NECK | | | | | | | | | | | | |
| NT-ARB D12-M06-120 | 12 | M6 | 11 | 6.5 | 120 | 10 | | | | | | ● |
| NT-ARB D16-M08-150 | 16 | M8 | 14 | 8.5 | 150 | 10 | | | | | | ● |
| NT-ARB D16-M08-200 | 16 | M8 | 14 | 8.5 | 200 | 10 | | | | | | ● |
| NT-ARB D20-M10-150 | 20 | M10 | 18 | 10.5 | 150 | 12 | | | | | | ● |
| NT-ARB D20-M10-250 | 20 | M10 | 18 | 10.5 | 250 | 12 | | | | | | ● |
| NT-ARB D25-M12-200 | 25 | M12 | 23 | 12.5 | 200 | 15 | | | | | | ● |
| NT-ARB D25-M12-300 | 25 | M12 | 23 | 12.5 | 300 | 15 | | | | | | ● |
| NT-ARB D32-M16-200 | 32 | M16 | 29 | 17 | 200 | 18 | | | | | | ● |
| NT-ARB D32-M16-350 | 32 | M16 | 29 | 17 | 350 | 18 | | | | | | ● |

★ 1st choice, ☆ suitable, ● stock standard, ⊙ non-stock standard (no MOQ), ○ non-stock standard (MOQ), ▲ upcoming product, ▽ stock exhaustion

INDEXABLE

A - TURNING

B - THREADING

C - GROOVING

D - MILLING

E - DRILLING

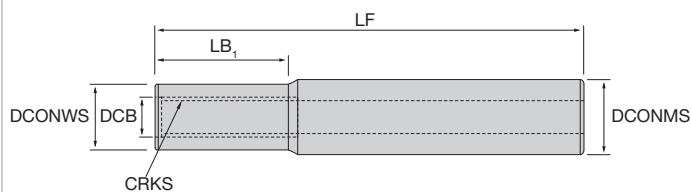
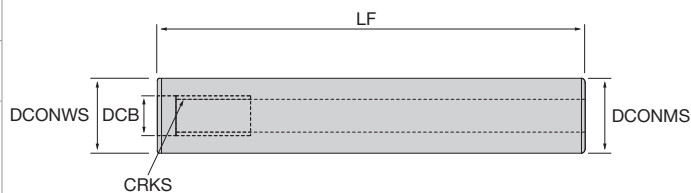
F - ACCESSORIES

G - SPARE PARTS

NT-ARB-HM

Arbors for screw-in cutters

- Carbide arbors
- Central coolant hole
- Screw-in cutters connection threads
- Available in straight type and shrink-neck type
- High rigidity for high precision machining under stable conditions



| Designation | DCONMS | CRKS | DCONWS | DCB | LF | LB1 | | | | | Stock |
|--------------------------------|--------|------|--------|------|-----|-----|--|--|--|--|-------|
| STRAIGHT SHANK ARBOR | | | | | | | | | | | |
| NT-ARB-HM D11-M06-150 | 11 | M6 | 11 | 6.5 | 150 | - | | | | | ▽ |
| NT-ARB-HM D12-M06-100 | 12 | M6 | 12 | 6.5 | 100 | - | | | | | ● |
| NT-ARB-HM D12-M06-150 | 12 | M6 | 12 | 6.5 | 150 | - | | | | | ● |
| NT-ARB-HM D12-M06-200 | 12 | M6 | 12 | 6.5 | 200 | - | | | | | ● |
| NT-ARB-HM D16-M08-100 | 16 | M8 | 16 | 8.5 | 100 | - | | | | | ● |
| NT-ARB-HM D16-M08-150 | 16 | M8 | 16 | 8.5 | 150 | - | | | | | ● |
| NT-ARB-HM D16-M08-200 | 16 | M8 | 16 | 8.5 | 200 | - | | | | | ● |
| NT-ARB-HM D20-M10-100 | 20 | M10 | 20 | 10.5 | 100 | - | | | | | ● |
| NT-ARB-HM D20-M10-150 | 20 | M10 | 20 | 10.5 | 150 | - | | | | | ● |
| NT-ARB-HM D20-M10-200 | 20 | M10 | 20 | 10.5 | 200 | - | | | | | ● |
| NT-ARB-HM D20-M10-300 | 20 | M10 | 20 | 10.5 | 300 | - | | | | | ● |
| NT-ARB-HM D25-M12-100 | 25 | M12 | 25 | 12.5 | 100 | - | | | | | ● |
| NT-ARB-HM D25-M12-150 | 25 | M12 | 25 | 12.5 | 150 | - | | | | | ○ |
| NT-ARB-HM D25-M12-200 | 25 | M12 | 25 | 12.5 | 200 | - | | | | | ● |
| NT-ARB-HM D25-M12-300 | 25 | M12 | 25 | 12.5 | 300 | - | | | | | ○ |
| ARBOR WITH REDUCED NECK | | | | | | | | | | | |
| NT-ARB-HM D12-11-M06-100 | 12 | M6 | 11 | 6.5 | 100 | 37 | | | | | ● |
| NT-ARB-HM D12-11-M06-150 | 12 | M6 | 11 | 6.5 | 150 | 52 | | | | | ● |
| NT-ARB-HM D16-13.8-M08-150 | 16 | M8 | 13.8 | 8.5 | 150 | 42 | | | | | ● |
| NT-ARB-HM D16-13.8-M08-200 | 16 | M8 | 13.8 | 8.5 | 200 | 57 | | | | | ● |
| NT-ARB-HM D20-18.2-M10-150 | 20 | M10 | 18.2 | 10.5 | 150 | 54 | | | | | ● |
| NT-ARB-HM D20-18.2-M10-200 | 20 | M10 | 18.2 | 10.5 | 200 | 78 | | | | | ● |

★ 1st choice, ☆ suitable, ● stock standard, ○ non-stock standard (no MOQ), ○ non-stock standard (MOQ), ▲ upcoming product, ▽ stock exhaustion

